



AIR FORCE FLIGHT TEST CENTER

APRIL 1984

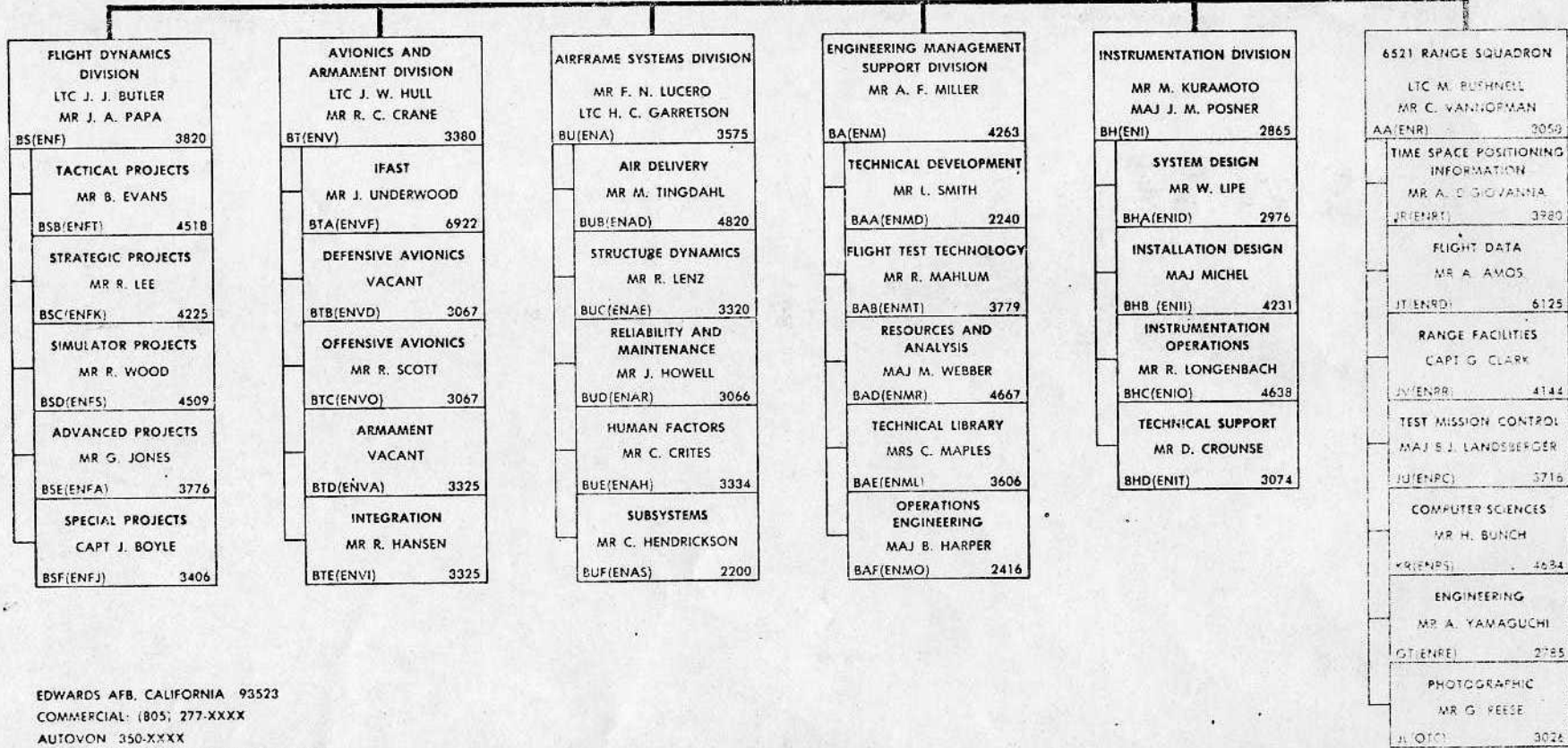
COMMANDER
COL EDWARD B. RUSSELL
AA(EN) 3306

TECHNICAL DIRECTOR
MR C. ADOLPH
AA(EN) 3238

PLANS, PROGRAMS & ADMINISTRATION OFFICE
MR J. R. SOMSEL
BO(ENX) 4999

HEADQUARTERS SQUADRON SECTION
LT S. G. CARBAUGH
AX(CCO) 3554

6520 TEST GROUP



EDWARDS AFB, CALIFORNIA 93523
 COMMERCIAL: (805) 277-XXXX
 AUTOVON 350-XXXX
 ISSUED BY 6520 TEST GROUP (ENXP 3535)
 EXPIRES MAY 1984

FLIGHT DYNAMICS DIVISION

7 Jun 84

6520 TESTG/ENF, Stop 239 (BS) 3820/3821/3822 Room 301

JEROME J. BUTLER LT COL Chief
 ROGER C. CRANE GM-14 Deputy Chief
 ARDITH L. RICHARDSON GS-6 Secretary

6520 TESTG/ENFA (BSE) 3776 RM 303
 JONES, Gerald L. GM-14 Branch Chief
 CAMERON, Deborah GS-4 3895
 BROWN, Frank S. GS-12 T-46/7857
 CAINE, James A. GS-11 AFTI/F16/966-3539
 DARUS, Peter J. LWOP
 EISCHENS, William L. CAPT F-15/4662
 ERICKSON, Mark S. 2Lt F-15/4662
 HICKS, John W. GS-12 X-29/966-3301
 HINES, Dennis O. 1Lt AFTI16/966-3537
 HUME, Michael V. 1Lt CCQ/3554
 JOHNSON, Donald K. GS-12 F-15/4662
 MAEDA, Nancy A. LTFT
 PORTER, Tim V. GS-9 T-46/4191
 SCHADE, Gilbert W. GS-7 7855
 SERLEY, David M. 2LT T-46/4662
 SKOOG, Mark A. GS-12 AFTI16/966-5105
 SOROKOWSKI, Paul J. GS-12 AFTI16/966-3536
 TROUVE, Matthew J. GS-4 X-29/966-3733
 TWISDALE, Thomas R. GS-12 4225
 WEBSTER, Frederick R. GS-12 X-29/966-3733
 WEST, Johnny C. CAPT X-29/966-3793
 WOODFORD, Thomas R. GS-9 T-46/7856

6520 TESTG/ENFT (BSB) 4518 RM 309
 EVANS, Robert D. GM-14 Branch Chief
 BAIER, Manfred J. F-16/2228
 CRAWFORD, Mark R. GS-12 F-16/2228
 CUZICK, William E. 1Lt F-16/2228
 DORR, Dan W. GS-9 F-16/2228
 FRIEDMAN, Lee M. 1LT F-16/2228
 GARLAND, Michael P. GM-13 F-16XL/2059
 HENDERSON, WILLIAM G. GS-5 F-16/2228
 JACON, William J. GS-7 F-16XL/2339
 KAMIS, Stephanie 2Lt F-16/2228
 McGLAMRY, Ernest W. 2Lt F-16XL/2939
 McLAUGHLIN, Michael J. GS-12 F-16/2228
 PAPE, James K. GM-14 F-16/2795
 ROTH, Dan A. GM-13 SE/3217
 SCOTT, Sheryl R. GS-9 F-16XL/2939
 SNYDER, Todd H. LWOP
 SOCCI, Marion F. GS-9 F-16XL/2939
 VAN DE GRAAF, Henry C. GS-11 F-16XL/2939
 WARNEKING, Deborah 2Lt F-16/2228
 WATTS, Lisa E. GS-5 F-16/2228
 WEBB, Allan T. GS-12 F-16/2228
 YOST, Mitchell A. GS-5 F-16/2228

6520 TESTG/ENFS (BSD) 4509/2082 Bldg 1408
 WOOD, Richard A. GM-14 Branch Chief
 ANDERSON, Gretchen R. 2Lt
 ANDERSON, Roy J. W. TSgt
 DUEY, Dennis R. GS-12
 FINCH, Donald B. GS-7
 KARPINSKI, Thomas S. SSGT
 LeDUC, Larry W. GS-12
 MARTIN, Gary S. GS-12
 MOYA, Esequiel T. GS-11
 PICK, Jonathan C. GS-9
 WADA, Douglas A. GS-9

6520 TESTG/ENFJ (BSF) 3718 RM 307
 BOYLE, James M. CAPT Branch Chief
 CURLEY, Mark A. GS-12 966-3161
 DeANDA, Albert G. GS-11 2484
 FARIS, Ronald J. CAPT TEO/6640
 FISH, William N. GS-12 2433
 FRITTS, Steven G. 2Lt F-11I/966-3159
 HERZIG, Jennifer L. GS-9 7861
 KENNINGTON, Robert G. GM-13 B-1/7859
 NESST, David L. GS-11 7862
 OLSON, Wayne M. GS-13 3406
 PACE, Michael R. GS-7 F-20/6548
 SMITH, Stephen B. GM-13 F-11I/966-3160
 SVENDSEN, Keith C. CAPT TEO/3240
 WALLACE, Alan M.B. 1Lt 3406/2484

6520 TESTG/ENFK (BSC) 2992 RM 305
 LEE, Robert E. GS-13 Branch Chief
 BRADFIELD, Edward N. GM-14 England
 BEECH, Stanley H. GS-12 Bldg 4505/7610
 COLGREN, Nell Justice GS-11 HH60/0762
 CREWS, Joseph P. 2Lt HH60/0761
 DES LAURIERS, Yvonne GS-12 ACM/7648
 FREEMAN, Paul J. 2LT B-1/0670
 GOBERT, Don O. GM-13 B-1/0592
 HART, Ronald E. GS-12 ACM/7647
 HERZIG, Steven C. 2Lt B-1/7950
 HUCKABONE, Thomas C. 2Lt B-1/0593
 JACOBS, Paul P. CAPT B-1/0682
 LUTES, Charles D. 2Lt ACM/7648
 OKUBARA, Gary M. GS-12 Bldg 4505/7610
 OLIVER, Tony HH60/0762
 RAY, Ronald J. GS-9 B-1/0600
 REINERT, Richard A. 1Lt Bldg 4505/7610
 SALLMAN, Ramsey N. 2Lt HH60/0761
 SCOFIELD, Jan W. GS-12 Bldg 4505/7610
 SPRINGER, Robert H. GS-12 HH60/0760
 TIERNEY, Paul K. GS-12 B-1/0591

6520 TESTG/ENFO Rm 309
 HARPER, John B. Maj 7867
 ATKESON, Peter L.C. 1Lt 7865
 BOLINGER, Scott 2Lt F-16/6854
 BOYUM, Dennis R. Capt T-46/7858
 CORSENTINO, Daryl L. Capt HH60/2410
 COYNE, William S. 1Lt F-16 GPs/6854
 CRIBBS, Micheal J. 2Lt OAS/3466
 DANE, Carl W. GS-5 F-15/4662
 FRIES, David G. 1Lt F-16/3770
 JONES, Reginald L. 1Lt ACM/7649
 KACZYNSKI, John E. 1Lt LANTIRN/4627
 MEEKER, Andrew D. GS-7 A-10/3240
 NIEMANTSYERDIET, S. 2Lt ASAT/6632
 NUSZ, William Capt B-1/7953
 ORTEGA, Lorenzo Capt X-29/966-3301
 SPINA, Louis R. 2Lt LANTIRN/4627
 STAMBOVSKY, Robert A. GS-12 HH-60D/2410
 TRINKLEIN, Marc S. 1Lt AFTI/F-16/2791
 WANICZEK, Otto J. Capt B-1/7953